

**human CD11a Antibody**  
**Purified Mouse Monoclonal Antibody (Mab)**  
**Catalog # AM8654b****Specification**

---

**human CD11a Antibody - Product Information**

Application	FC,E
Primary Accession	<a href="#">P20701</a>
Reactivity	Human
Host	Mouse
Clonality	monoclonal
Isotype	IgG1

**human CD11a Antibody - Additional Information****Gene ID** 3683**Dilution**

FC~~1:50

E~~Use at an assay dependent concentration.

**Format**

Purified monoclonal antibody supplied in PBS with 0.09% (W/V) sodium azide. This antibody is purified through a protein G column, followed by dialysis against PBS.

**Storage**

Maintain refrigerated at 2-8°C for up to 2 weeks. For long term storage store at -20°C in small aliquots to prevent freeze-thaw cycles.

**Precautions**

human CD11a Antibody is for research use only and not for use in diagnostic or therapeutic procedures.

**human CD11a Antibody - Protein Information****Name** ITGAL ([HGNC:6148](#))**Synonyms** CD11A

**Function** Integrin ITGAL/ITGB2 is a receptor for ICAM1, ICAM2, ICAM3 and ICAM4. Integrin ITGAL/ITGB2 is a receptor for F11R (PubMed:[11812992](#), PubMed:[15528364](#)). Integrin ITGAL/ITGB2 is a receptor for the secreted form of ubiquitin-like protein ISG15; the interaction is mediated by ITGAL (PubMed:[29100055](#)). Involved in a variety of immune phenomena including leukocyte-endothelial cell interaction, cytotoxic T-cell mediated killing, and antibody dependent killing by granulocytes and monocytes. Contributes to natural killer cell cytotoxicity (PubMed:[15356110](#)). Involved in leukocyte adhesion and transmigration of leukocytes including T-cells and neutrophils (PubMed:[11812992](#)). Acts as a platform at the immunological synapse to translate TCR engagement and density of the ITGAL ligand ICAM1 into graded adhesion

(PubMed:[38195629](#)). Required for generation of common lymphoid progenitor cells in bone marrow, indicating a role in lymphopoiesis (By similarity). Integrin ITGAL/ITGB2 in association with ICAM3, contributes to apoptotic neutrophil phagocytosis by macrophages (PubMed:[23775590](#)).

#### Cellular Location

Cell membrane; Single-pass type I membrane protein. Note=Upon antigen recognition by the TCR, is recruited to lipid rafts (PubMed:15684041).

#### Tissue Location

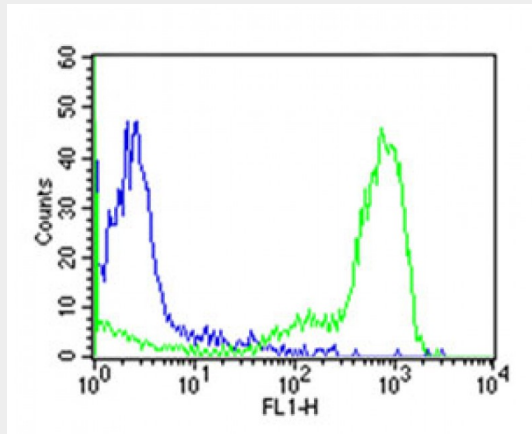
Leukocytes.

### human CD11a Antibody - Protocols

Provided below are standard protocols that you may find useful for product applications.

- [Western Blot](#)
- [Blocking Peptides](#)
- [Dot Blot](#)
- [Immunohistochemistry](#)
- [Immunofluorescence](#)
- [Immunoprecipitation](#)
- [Flow Cytometry](#)
- [Cell Culture](#)

### human CD11a Antibody - Images



Overlay histogram showing human peripheral blood lymphocytes stained with CD11a antibody (green line). The cells were incubated in 2% bovine serum albumin to block non-specific protein-protein interactions followed by the antibody (1:50 dilution) for 60min at 37°C. The secondary antibody used was Goat Anti-Mouse IgG, DyLight® 488 Conjugated Highly Cross-Adsorbed (OJ192088) at 1/200 dilution for 40min at 37°C. Isotype control antibody (blue line) was mouse IgG1 (1µg/1x10<sup>6</sup> cells) used under the same conditions. Acquisition of >10,000 events was performed.